

PART OF N.W. 1/4 OF SEC. 4, T.6N., R.1W. & S.W. 1/4 OF SEC. 33, T.7N., R.1W., S.L.B. & M. 193

# GREEN ACRES ESTATES NO. 9

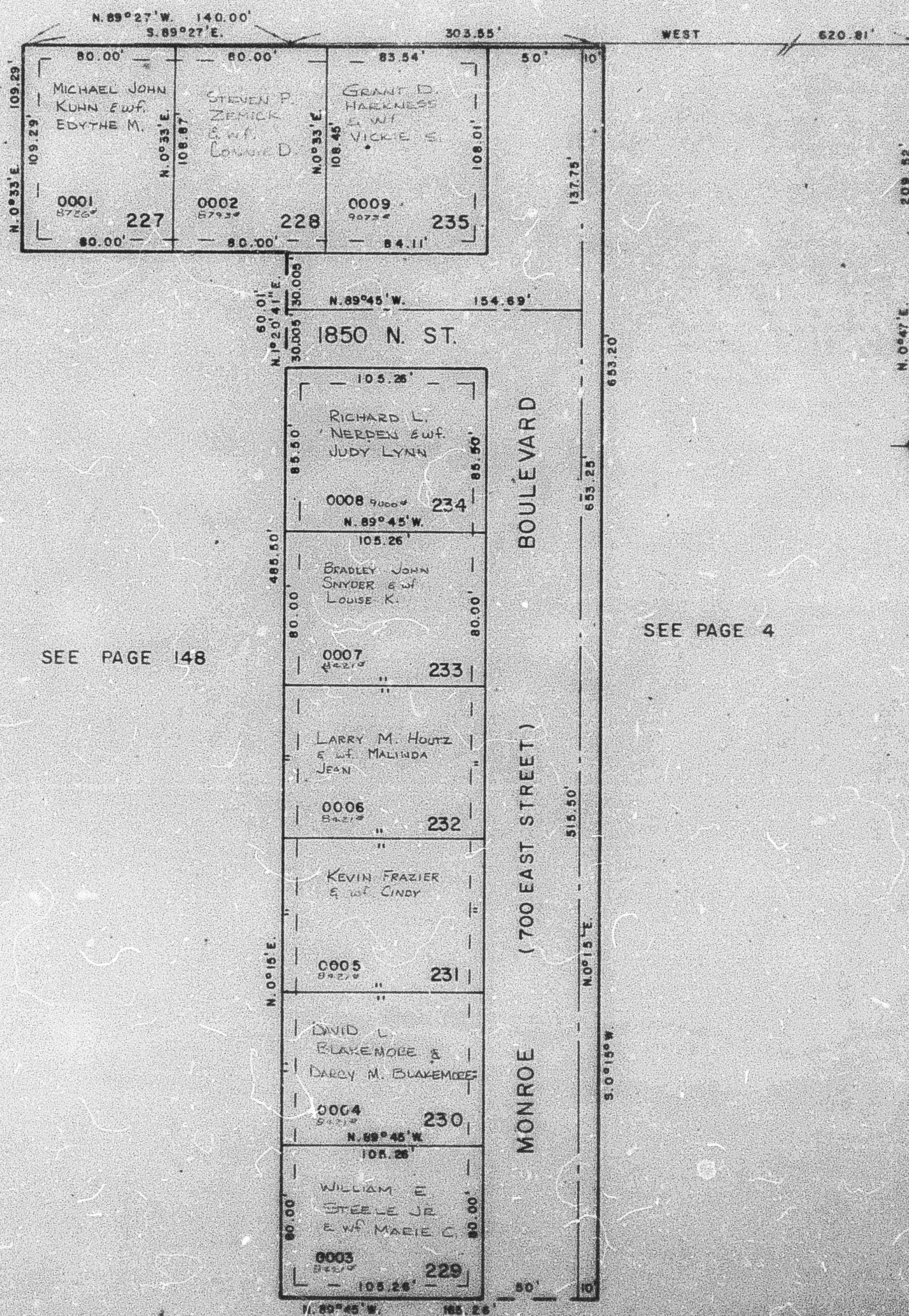
IN NORTH OGDEN CITY

TAXING UNIT: 10

SCALE 1" = 50'

PREFIX: II-193

SEE BOOK 17 PAGE 76



SEE PAGE 148

SEE PAGE 4

FOR COMPLETE ENG. DATA  
SEE ORIG. DED. PLAT IN  
BOOK 25, PAGE 49

7' UTILITY & DRAINAGE EASEMENTS  
EACH SIDE OF PROPERTY LINE AS  
INDICATED BY DASHED LINES

SEE PAGE 142